



HOMELESSNESS Partnering Strategy

2018

SHELTER CAPACITY REPORT



2018 Shelter Capacity Report

This publication is available for download at
canada.ca/publiccentre-ESDC.

It is also available upon request in multiple formats (large print, MP3, Braille, audio CD, e-text CD, DAISY or accessible PDF), by contacting 1 800 O-Canada (1-800-622-6232).
By teletypewriter (TTY), call 1-800-926-9105.

© Her Majesty the Queen in Right of Canada, 2019

For information regarding reproduction rights:
droitdauteur.copyright@HRSDC-RHDCC.gc.ca.

PDF

Cat. No.: Em9-3E-PDF
ISSN: 1925-718X

ESDC

Cat. No.: SSD-044-03-19E

TABLE OF CONTENTS

1

INTRODUCTION

2

TYPES OF SHELTERS

4

NATIONAL SUMMARY: EMERGENCY SHELTERS (2018)

5

EMERGENCY SHELTERS BY CLIENTELE SERVED (2018)

6

EMERGENCY SHELTERS AND SHELTER BEDS BY COMMUNITY (2018)

Newfoundland and Labrador	6
Nova Scotia	6
New Brunswick	6
Prince Edward Island	7
Québec	7
Ontario	8
Manitoba	9
Saskatchewan	9
Alberta	10
British Columbia	11
Yukon	12
Northwest Territories	12
Nunavut	12

13

APPENDIX A: TRANSITIONAL HOUSING BY CLIENTELE SERVED (2018)

14

APPENDIX B: VIOLENCE AGAINST WOMEN SHELTERS (2018)

INTRODUCTION

The Shelter Capacity Report is a descriptive account of capacity statistics for emergency homeless shelters in Canada. The number of emergency shelter facilities and the number of permanent beds are reported for each province and territory, as well as by community. In addition, brief overviews of Transitional Housing facilities and Violence Against Women shelters are provided in the appendices.

This report is provided annually by Employment and Social Development Canada (ESDC), Homelessness Partnering Strategy (HPS). The information in this report was obtained from the National Service Provider List (NSPL), a comprehensive listing of homeless shelters in Canada. This list is maintained by ESDC as part of the National Homelessness Information System (NHIS), a data development initiative that focuses on the collection and analysis of homeless shelter data in Canada.

2018 UPDATE ESDC conducted a comprehensive update of the NSPL in 2018. Between August and December 2018, community entities (CE) were given the opportunity to update and validate information on services in their community. There was an 85% response rate from designated communities. Services in the remaining 15%, as well as non-designated communities with no CE were contacted directly to update their information. This approach sets a new baseline for the NSPL and ensures higher accuracy of findings. As a result, changes in the reported number of shelters and beds between 2017 and 2018 primarily reflect updated information rather than actual changes in national shelter capacity.

Types of Shelters

EMERGENCY SHELTERS: facilities that provide temporary, short-term accommodation for homeless individuals and families. This may or may not include other services such as food, clothing or counselling.

TRANSITIONAL HOUSING: facilities that provide temporary shelter, but can be differentiated from emergency shelters by the longer length of stay and greater intensity of support services offered to clients. Transitional housing is an intermediate step between emergency shelter and permanent housing. Support services help clients gain stability and self-sufficiency to maintain permanent housing. Stays are typically between three months and three years.

VIOLENCE AGAINST WOMEN (VAW) SHELTERS: facilities that provide temporary shelter to single women or women with children fleeing domestic abuse. They may function in either a crisis capacity or as transitional or second-stage housing.



Emergency shelters and transitional housing are further characterized according to the clients they serve



Men's shelters provide services to adult males. Some also accept youth.



Youth shelters provide services to youth. Shelters have varying definitions of youth, often ranging from 12 to 29 years of age.



Women's shelters provide services to adult females. Some also accept youth.



Family shelters provide services to families and adults with dependents. Some also accept single adult women without dependents.



General shelters provide services to adult males and females. Some also accept youth.

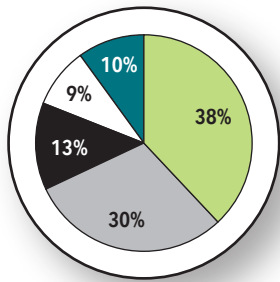
National Shelter Capacity



392
Emergency
Shelters



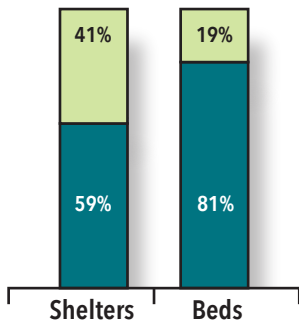
15,859
Permanent
Beds



■ Family ■ Youth ■ Women's
■ Men's ■ General

Emergency Shelter Beds by Clientele Served

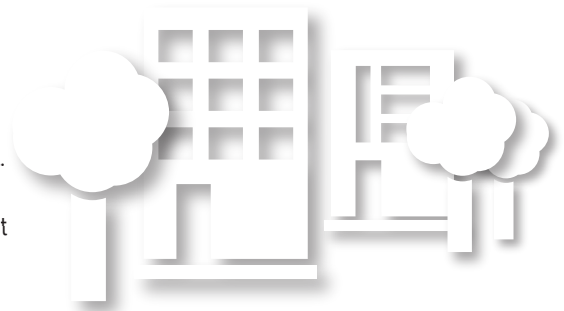
- 38% of shelter beds are in general shelters that serve both men and women.
- Men's shelters account for a greater percentage of all shelter beds (30%) compared to women's shelters (13%).
- Family shelters account for 10% of all shelter beds.
- Shelters that exclusively serve youth tend to be smaller in size. Although they make up almost a quarter of all shelters, they account only for 9% of all emergency shelter beds.



■ small communities (population < 300,000)
■ large communities (population > 300,000)

Community

The majority of emergency shelter beds (81%) are found in large cities. While smaller communities have fewer shelter beds, they still account for nearly half (41%) of all emergency shelters.



The average number of beds per shelter is 18 in small communities versus 55 in large communities.

National Summary: Emergency Shelters (2018)*

Province/Territory	2018		2017		2016	
	Shelters	Beds	Shelters	Beds	Shelters	Beds
Newfoundland and Labrador	7	67	6	61	5	53
Nova Scotia	9	220	9	217	8	208
New Brunswick	9	157	9	148	9	150
Prince Edward Island	1	7	1	7	1	7
Québec	65	1,757	75	1,934	74	1,948
Ontario	149	6,898	149	6,764	147	6,622
Manitoba	13	650	15	661	15	661
Saskatchewan	18	476	21	443	21	439
Alberta	35	3,304	36	3,182	36	3,182
British Columbia	78	2,170	77	2,069	76	2,019
Yukon	3	27	3	27	3	27
Northwest Territories	3	82	3	76	4	100
Nunavut	2	44	2	34	2	34
CANADA	392	15,859	407	15,623	401	15,450

* Changes in the reported number of shelters and beds during the years 2016 to 2018 may reflect updated information rather than actual changes in capacity.

Emergency Shelters by Clientele Served (2018)

Province/ Territory	General		Men's		Women's		Youth		Family		Total	
	Shelters	Beds	Shelters	Beds	Shelters	Beds	Shelters	Beds	Shelters	Beds	Shelters	Beds
Newfoundland and Labrador	3	32	0	0	0	0	3	20	1	15	7	67
Nova Scotia	1	16	3	138	3	42	2	24	0	0	9	220
New Brunswick	4	82	2	45	2	20	1	10	0	0	9	157
Prince Edward Island	0	0	1	7	0	0	0	0	0	0	1	7
Québec	20	363	7	887	12	220	25	274	1	13	65	1,757
Ontario	27	1,053	39	2,701	27	1,067	32	774	24	1,303	149	6,898
Manitoba	8	520	0	0	0	0	2	24	3	106	13	650
Saskatchewan	2	56	6	156	7	225	3	39	0	0	18	476
Alberta	17	2,485	4	320	4	197	8	132	2	170	35	3,304
British Columbia	43	1,338	14	483	10	221	10	126	1	2	78	2,170
Yukon	1	14	1	2	0	0	1	11	0	0	3	27
Northwest Territories	0	0	1	49	1	25	1	8	0	0	3	82
Nunavut	0	0	1	32	1	12	0	0	0	0	2	44
CANADA	126	5,959	79	4,820	67	2,029	88	1,442	32	1,609	392	15,859

Emergency Shelters and Shelter Beds by Community (2018)

Newfoundland and Labrador

	General		Men's		Women's		Youth		Family		Total	
	Shelters	Beds	Shelters	Beds	Shelters	Beds	Shelters	Beds	Shelters	Beds	Shelters	Beds
Happy Valley - Goose Bay	1	8	0	0	0	0	0	0	0	0	1	8
Natuashish	0	0	0	0	0	0	1	3	0	0	1	3
St. John's	2	24	0	0	0	0	2	17	1	15	5	56
TOTAL	3	32	0	0	0	0	3	20	1	15	7	67

Nova Scotia

	General		Men's		Women's		Youth		Family		Total	
	Shelters	Beds	Shelters	Beds	Shelters	Beds	Shelters	Beds	Shelters	Beds	Shelters	Beds
Halifax	0	0	2	126	2	36	1	20	0	0	5	182
New Glasgow	0	0	0	0	0	0	1	4	0	0	1	4
Sydney	0	0	1	12	1	6	0	0	0	0	2	18
Truro	1	16	0	0	0	0	0	0	0	0	1	16
TOTAL	1	16	3	138	3	42	2	24	0	0	9	220

New Brunswick

	General		Men's		Women's		Youth		Family		Total	
	Shelters	Beds	Shelters	Beds	Shelters	Beds	Shelters	Beds	Shelters	Beds	Shelters	Beds
Bathurst	1	12	0	0	0	0	0	0	0	0	1	12
Fredericton	1	10	1	25	1	10	0	0	0	0	3	45
Moncton	2	60	0	0	0	0	0	0	0	0	2	60
Saint John	0	0	1	20	1	10	1	10	0	0	3	40
TOTAL	4	82	2	45	2	20	1	10	0	0	9	157

Prince Edward Island

	General		Men's		Women's		Youth		Family		Total	
	Shelters	Beds	Shelters	Beds	Shelters	Beds	Shelters	Beds	Shelters	Beds	Shelters	Beds
Charlottetown	0	0	1	7	0	0	0	0	0	0	1	7
TOTAL	0	0	1	7	0	0	0	0	0	0	1	7

Québec

	General		Men's		Women's		Youth		Family		Total	
	Shelters	Beds	Shelters	Beds	Shelters	Beds	Shelters	Beds	Shelters	Beds	Shelters	Beds
Alma	1	1	0	0	0	0	0	0	0	0	1	1
Drummondville	0	0	0	0	0	0	2	18	0	0	2	18
Fermont	1	6	0	0	0	0	0	0	0	0	1	6
Gatineau	1	55	0	0	0	0	2	16	0	0	3	71
Joliette	1	6	0	0	0	0	2	21	0	0	3	27
La Pocatière	0	0	0	0	0	0	1	9	0	0	1	9
Mont-Laurier	1	9	0	0	0	0	0	0	0	0	1	9
Montreal	7	132	4	811	9	185	9	125	1	13	30	1,266
Quebec City	2	52	1	39	3	35	4	37	0	0	10	163
Rimouski	0	0	0	0	0	0	1	10	0	0	1	10
Rouyn-Noranda	1	15	0	0	0	0	0	0	0	0	1	15
Saguenay	0	0	1	29	0	0	0	0	0	0	1	29
Saint-Georges	1	23	0	0	0	0	0	0	0	0	1	23
Saint-Hyacinthe	0	0	0	0	0	0	1	9	0	0	1	9
Salaberry-de-Valleyfield	1	20	0	0	0	0	1	9	0	0	2	29
Sherbrooke	1	18	1	8	0	0	1	9	0	0	3	35
Trois-Rivières	2	26	0	0	0	0	1	11	0	0	3	37
TOTAL	20	363	7	722	12	220	25	274	1	13	65	1,757

Ontario

	General		Men's		Women's		Youth		Family		Total	
	Shelters	Beds	Shelters	Beds	Shelters	Beds	Shelters	Beds	Shelters	Beds	Shelters	Beds
Barrie-Simcoe	2	38	2	34	0	0	1	15	0	0	5	87
Brantford	1	36	1	28	0	0	1	20	0	0	3	84
Cobourg	1	20	0	0	0	0	0	0	0	0	1	20
Cochrane	0	0	1	6	0	0	0	0	0	0	1	6
Dufferin Region	0	0	0	0	0	0	1	20	0	0	1	20
Durham Region	0	0	1	40	1	45	1	13	1	20	4	118
Guelph	0	0	1	22	1	16	1	16	1	0	4	54
Halton Region	1	32	0	0	0	0	0	0	1	0*	2	32
Hamilton	0	0	3	215	3	51	1	20	1	103	8	389
Kenora	1	20	0	0	0	0	0	0	0	0	1	20
Kingston	1	29	0	0	0	0	1	15	1	19	3	63
Lindsay	0	0	0	0	0	0	0	0	1	19	1	19
London	2	58	2	198	1	10	1	36	1	41	7	343
Niagara Region	2	55	2	32	2	40	2	20	1	18	9	165
Nipissing/North Bay	1	19	0	0	1	10	0	0	0	0	2	29
Ottawa	1	76	3	459	2	125	1	28	3	277	10	965
Owen Sound	0	0	0	0	0	0	0	0	1	0*	1	0
Peel Region	1	119	1	86	0	0	2	54	1	225	5	484
Peterborough	0	0	1	40	1	10	0	0	1	30	3	80
Red Lake	1	16	0	0	0	0	0	0	0	0	1	16
Sarnia	1	25	1	20	0	0	1	9	1	3	4	57
Sault Ste. Marie	0	0	1	23	1	7	1	12	1	4	4	46
Sioux Lookout	1	20	0	0	0	0	0	0	0	0	1	20
Sudbury	0	0	1	22	0	0	1	16	1	26	3	64
Thunder Bay	1	42	1	17	0	0	0	0	0	0	2	59
Toronto	5	244	14	1,347	12	715	9	391	4	382	44	3,079
Waterloo Region	1	78	1	51	0	0	4	47	1	66	7	242
Windsor	2	108	1	31	1	11	0	0	0	0	4	150
Woodstock	1	18	0	0	0	0	0	0	1	10	2	28
York Region	0	0	1	30	1	27	3	42	1	60	6	159
TOTAL	27	1,053	39	2,701	27	1,067	32	774	24	1,303	149	6,898

* This is an emergency motel program with no fixed capacity. They only provide a bed in a motel when it is needed.

Manitoba

	General		Men's		Women's		Youth		Family		Total	
	Shelters	Beds	Shelters	Beds	Shelters	Beds	Shelters	Beds	Shelters	Beds	Shelters	Beds
Brandon	1	25	0	0	0	0	0	0	1	12	2	37
Dauphin	1	17	0	0	0	0	0	0	0	0	1	17
Flin Flon	1	10	0	0	0	0	0	0	0	0	1	10
Swan River	1	9	0	0	0	0	0	0	0	0	1	9
The Pas	0	0	0	0	0	0	0	0	1	34	1	34
Thompson	1	24	0	0	0	0	0	0	0	0	1	24
Winnipeg	3	435	0	0	0	0	2	24	1	60	6	519
TOTAL	8	520	0	0	0	0	2	24	3	106	13	650

Saskatchewan

	General		Men's		Women's		Youth		Family		Total	
	Shelters	Beds	Shelters	Beds	Shelters	Beds	Shelters	Beds	Shelters	Beds	Shelters	Beds
Moose Jaw	0	0	1	10	0	0	0	0	0	0	1	10
North Battleford	1	34	0	0	0	0	0	0	0	0	1	34
Prince Albert	1	22	0	0	1	50	0	0	0	0	2	72
Regina	0	0	2	64	2	76	1	15	0	0	5	155
Saskatoon	0	0	3	82	4	99	2	24	0	0	9	205
TOTAL	2	56	6	156	7	225	3	39	0	0	18	476

Alberta

	General		Men's		Women's		Youth		Family		Total	
	Shelters	Beds	Shelters	Beds	Shelters	Beds	Shelters	Beds	Shelters	Beds	Shelters	Beds
Brocket	1	0	0	0	0	0	0	0	0	0	1	0
Calgary	3	1,723	1	80	2	61	1	18	2	170	9	2,052
Edmonton	2	330	1	180	2	136	3	81	0	0	8	727
Grande Prairie	1	92	0	0	0	0	1	12	0	0	2	104
High Level	1	20	0	0	0	0	0	0	0	0	1	20
Lac La Biche	1	9	0	0	0	0	0	0	0	0	1	9
Lethbridge	1	80	0	0	0	0	1	8	0	0	2	88
Lloydminster	0	0	1	28	0	0	0	0	0	0	1	28
Medicine Hat	1	30	0	0	0	0	1	1	0	0	2	31
Red Deer	2	72	0	0	0	0	1	12	0	0	3	84
Standoff	1	0	0	0	0	0	0	0	0	0	1	0
Strathmore	1	10	0	0	0	0	0	0	0	0	1	10
Wood Buffalo	2	119	1	32	0	0	0	0	0	0	3	151
TOTAL	17	2,485	4	320	4	197	8	132	2	170	35	3,304

British Columbia

	General		Men's		Women's		Youth		Family		Total	
	Shelters	Beds	Shelters	Beds	Shelters	Beds	Shelters	Beds	Shelters	Beds	Shelters	Beds
Abbotsford	1	20	0	0	0	0	1	6	0	0	2	26
Campbell River	1	22	0	0	0	0	0	0	0	0	1	22
Chetwynd	1	3	0	0	0	0	0	0	0	0	1	3
Chilliwack	2	57	0	0	0	0	1	7	0	0	3	64
Courtenay	1	14	0	0	0	0	0	0	0	0	1	14
Dawson Creek	1	8	0	0	0	0	0	0	0	0	1	8
Duncan	1	15	0	0	0	0	0	0	0	0	1	15
Fort Nelson	0	0	1	6	0	0	0	0	0	0	1	6
Fort St. John	1	24	0	0	0	0	0	0	0	0	1	24
Hope	1	4	0	0	0	0	0	0	0	0	1	4
Kamloops	1	42	0	0	0	0	1	4	0	0	2	46
Kelowna	0	0	1	60	1	20	1	10	0	0	3	90
Mission	1	20	0	0	0	0	0	0	0	0	1	20
Nanaimo	0	0	1	23	1	14	0	0	0	0	2	37
Nelson	1	17	0	0	0	0	0	0	0	0	1	17
Penticton	1	16	0	0	0	0	0	0	0	0	1	16
Port Alberni	1	12	0	0	0	0	0	0	0	0	1	12
Prince George	1	30	1	21	1	30	1	10	0	0	4	91
Prince Rupert	1	8	0	0	0	0	0	0	0	0	1	8
Quesnel	1	10	0	0	0	0	0	0	0	0	1	10
Sechelt	1	19	0	0	0	0	0	0	0	0	1	19
Smithers	1	9	0	0	0	0	0	0	0	0	1	9
Squamish	1	12	0	0	0	0	0	0	0	0	1	12
Terrace	1	16	0	0	0	0	0	0	0	0	1	16
Vancouver	18	821	8	328	6	132	4	79	0	0	36	1,360
Vernon	1	25	1	24	0	0	0	0	0	0	2	49
Victoria	1	84	1	21	1	25	1	10	1	2	5	142
Williams Lake	1	30	0	0	0	0	0	0	0	0	1	30
TOTAL	43	1,338	14	483	10	221	10	126	1	2	78	2,170

Yukon

	General		Men's		Women's		Youth		Family		Total	
	Shelters	Beds	Shelters	Beds	Shelters	Beds	Shelters	Beds	Shelters	Beds	Shelters	Beds
Dawson City	0	0	0	0	1	2	0	0	0	0	1	2
Whitehorse	1	14	0	0	0	0	1	11	0	0	2	25
TOTAL	1	14	0	0	1	2	1	11	0	0	3	27

Northwest Territories

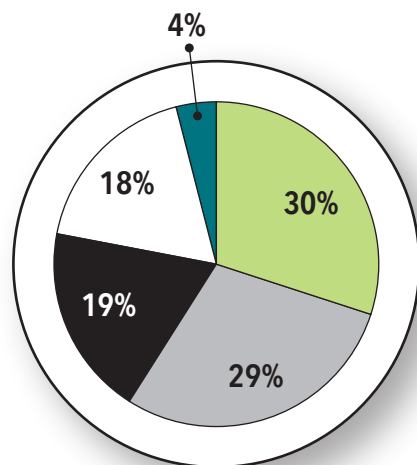
	General		Men's		Women's		Youth		Family		Total	
	Shelters	Beds	Shelters	Beds	Shelters	Beds	Shelters	Beds	Shelters	Beds	Shelters	Beds
Yellowknife	0	0	1	49	1	25	1	8	0	0	3	82
TOTAL	0	0	1	49	1	25	1	8	0	0	3	82

Nunavut

	General		Men's		Women's		Youth		Family		Total	
	Shelters	Beds	Shelters	Beds	Shelters	Beds	Shelters	Beds	Shelters	Beds	Shelters	Beds
Iqaluit	0	0	1	32	1	12	0	0	0	0	2	44
TOTAL	0	0	1	32	1	12	0	0	0	0	2	44

Appendix A: Transitional Housing by Clientele Served (2018)

Province/ Territory	General		Men's		Women's		Youth		Family		Total	
	Shelters	Beds	Shelters	Beds	Shelters	Beds	Shelters	Beds	Shelters	Beds	Shelters	Beds
Newfoundland and Labrador	1	74	0	0	1	3	2	25	0	0	4	102
Nova Scotia	0	0	1	19	4	55	3	45	0	0	8	119
New Brunswick	1	4	0	0	0	0	1	10	0	0	2	14
Prince Edward Island	0	0	0	0	0	0	0	0	0	0	0	0
Québec	26	447	14	668	26	745	42	566	6	96	114	2,522
Ontario	23	519	18	646	24	398	34	442	5	183	104	2,188
Manitoba	6	144	2	58	0	0	2	27	0	0	10	229
Saskatchewan	5	106	5	88	5	65	6	62	1	7	22	328
Alberta	10	296	7	575	6	151	13	152	1	3	37	1,177
British Columbia	20	667	4	109	4	57	5	68	0	0	33	901
Yukon	0	0	1	2	0	0	0	0	0	0	1	2
Northwest Territories	0	0	1	32	1	18	1	13	0	0	3	63
Nunavut	0	0	0	0	0	0	0	0	0	0	0	0
CANADA	92	2,257	53	2,197	71	1,492	109	1,410	13	289	338	7,645



Family
 Youth
 Women

Men
 General

Appendix B: Violence Against Women Shelters (2018)

Province/Territory	Shelters	Beds
Newfoundland and Labrador	15	176
Nova Scotia	15	192
New Brunswick	18	298
Prince Edward Island	3	45
Québec	95	1,360
Ontario	119	2,466
Manitoba	17	364
Saskatchewan	14	283
Alberta	46	1,223
British Columbia	93	953
Yukon	5	49
Northwest Territories	6	44
Nunavut	5	41
CANADA	451	7,494